

SmartCharge
**THE MOST USER FRIENDLY
BATTERY CHARGER**



4A - 6A - 8A - 10A

DEFA[®]

SmartCharge

easy - safe - user friendly

SmartCharge is an intelligent charger making battery charging safe and easy regardless if you are charging your boat, car, mower or motorcycle.

The only thing needed is to connect the charging clips to the battery, connect to an power outlet and push the ON button.

SmartCharge will read what type of battery and what status the battery is in to determine what charging is needed. You do not have to think about sparks when connecting or be concerned of overcharging the battery. When you are done, you simply wind up the cables in the cable tracks on the charger and you are ready for the next time you need it.



SmartCharge 4A
Best in Test in Mottoori Finland.
Design Awarded in Norway.



AWARD FOR DESIGN EXCELLENCE
NORWEGIAN DESIGN COUNCIL



THE DESIGN FOR ALL AWARD
NORWEGIAN DESIGN COUNCIL

POWERSUPPLY

Every so often you need access to continuous current, for instance when changing the car battery. PowerSupply is what you need when you do not want to disconnect power and reset all settings in the car, or if you would like to use a 12V unit such as a cooling box.

SmartCharge has this function that you easily activate by holding down the ON button for 5 seconds. Your SmartCharge will then produce 13,6V and the maximum possible ampere.

SMARTCHARGE - IN FOUR VERSIONS:

4A for batteries from 4 to 120Ah (Amper hours).
6A for 10 - 150Ah,
8A for 20 - 200Ah,
10A for 30 - 250Ah



* Mottori, a magazine in Finland, conducted a battery test in 2013. SmartCharge was the test winner based on user functionality, design and quality.

SmartCharge features



ERROR PROOF

SmartCharge is shockproof, sparkproof, and is protected against reverse polarity. With SmartCharge, nothing can go wrong.



SmartCharge 8A and 10A

SmartCharge 8A and 10A are larger and more powerful chargers, suitable for a more effective charging of larger batteries in for instance your car or boat.

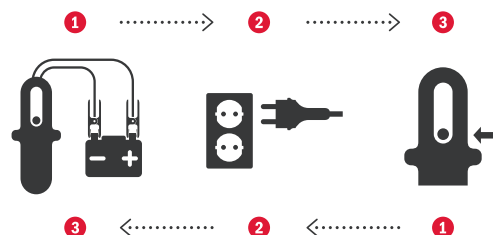
CHARGING BATTERIES WITH LOW VOLTAGE

Will charge 12V batteries with voltage as low as 2V.

CHARGES LARGER BATTERIES

Suitable for batteries from 20 to 250Ah.

3 SIMPLE STEPS FOR CHARGING YOUR BATTERY!



SUMMARY

- ▶ One-button solution
- ▶ Backlights make it easier to use in dark conditions
- ▶ Automatically adapt charging to your battery (Ah)
- ▶ Will give you status of charging in an easy way
- ▶ Integrated cable winding for easy storage and usage
- ▶ Temperature compensated charging cycle
- ▶ No risk of overloading

Battery types:



14,7 Higher voltage option for special batteries (e.g. Calcium or Silver).

Car



You never know when you are about to have a flat battery – and when you do find out it is particularly irritating. A fast and practical charger is the only solution if you do not want to have to call for assistance. When we use our car every day, it puts a strain on the battery. Most people normally only drive short distances and starting the car each time takes a lot of power out of the battery. Using the car radio, air-condition system and lights and recharging mobile phones through the 12V outlet also puts a strain on the battery. Being a car battery is a tough job – and it is simply not possible to see whether a battery is almost fully charged or discharged.

YOU CAN SIMPLY SOLVE THIS PROBLEM WITH DEFA SMARTCHARGE

Attach the clamps to the battery terminals, insert the plug into the socket and press the ON button. SmartCharge will take care of the rest. The display will indicate when the job is done. You then simply wind up the cables around the charger and your SmartCharge will be ready for immediate use next time.

PERFECT FOR CARS THAT ARE PUT AWAY FOR THE WINTER!

Many cars are only used during the summer and these need a special type of recharging. Some cars can lose important information and settings if the battery is disconnected completely. SmartCharge 8A and 10A can solve this problem too – you can use it as a power supply when changing the battery and you can also leave it on continuously, as it will never overload the battery. In such cases, we recommend that you install a 12V Charging Socket somewhere suitable, such as in the boot, and connect the SmartCharge to this. The charging socket can be used like a normal 12V power socket when not in use for charging, e.g. for a cooling box or DVD player or for charging your mobile phone.

Car



Attach the clamps to the battery terminals, insert the plug into a power socket and press the ON button.



12V Charging Socket can be used to recharge your battery or as a power supply when you need it.



SmartCharge is ideal for cars that are put in storage for the winter, keeping the battery topped up all winter, e.g. through a retrofitted 12V Charging Socket.

Boat



Today, most outboard motors have an electric starter motor, yet very few boats are used in a way which gives trouble-free starting throughout the season. The reason is often that the battery lacks sufficient power to turn the starter motor over and is in need of recharging. SmartCharge is the obvious solution because it is simple and easy to take on board the boat.

WITH A 12V CHARGING SOCKET FITTED TO THE BOAT, YOU CAN RECHARGE THE BATTERY WITHOUT CONNECTING THE CHARGER DIRECTLY TO THE BATTERY

This is the perfect solution for boats between 13 and 22 feet. Some boats are now supplied with a 12V charging socket installed as standard. It is also very easy to retrofit. With a charging socket fitted, you can easily connect up the SmartCharge instead of having to connect the individual battery terminals. It doesn't get any simpler. The socket can also be used to supply power for a cooling box, mobile phone charger, MP3 player, etc.

THE 12V BATTERY INDICATOR SHOWS THE STATUS OF THE BATTERY

A simple and useful accessory is the 12V Battery indicator. Simply insert it in a 12V charging socket or another 12V outlet, where available, and you can read the status of your battery. If the yellow or red light is illuminated, just take out your SmartCharge. If the green light is illuminated, the battery does not need charging.



Boat



The 12V Charging Socket can also be used as power supply.



SmartCharge will charge the battery optimally and warn you in the event of a battery fault.



The conveniences fitted to modern pleasure craft demand a healthy battery.

Other vehicles



It is a long time since small vehicles were fitted with a cord or kick starter. Today, even small mopeds have an electric starter motor and many people find that this luxury is useless with a flat battery. If you have a motorbike, snow scooter or ATV, you will know exactly what we are talking about. If you fit a 12V Mini Charging Cable, you can easily set the vehicle to charge using your SmartCharge. The SmartCharge will then not only charge the battery optimally; it will also perform a battery check both before and after charging – and warn you if anything is wrong with the battery.

CHARGER CABLE WITH INTEGRATED BATTERY INDICATOR

The charger cable is connected to the battery and simply placed somewhere where it will be visible. The visible end is not just a dirt-cap to prevent dirt and moisture from getting into the charger socket; it is an extremely practical battery indicator! It will enable you to check the status of the battery easily using the red, yellow or green lights. Could it get any easier?



Other vehicles



Using a 12V Mini Charging Cable, you can easily check the status of, and charge, your battery



12V Mini Charging Cable.



This is how it works- but we recommend you let the charging cable hang so that it is easily accessible. That way you won't have to find your way to the battery in order to charge it.

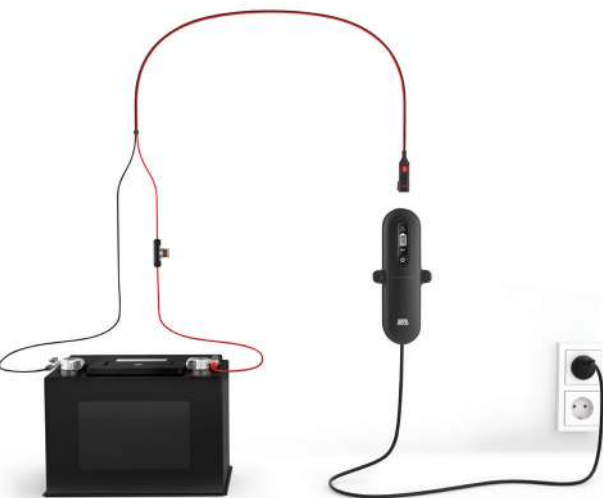
Small engines



The modern home is full of comfortable tools and aids to perform both big and small tasks alike, e.g. snow blowers, lawn mowers, small tractors, etc. Common to many of them is the fact that they have a small, but essential, electric starter motor. Having an electric starter motor means there must be a small battery too, and – just like large batteries – a small battery can become fully discharged and need charging.

CHARGING CABLE WITH INTEGRATED BATTERY INDICATOR

12V Mini Charging Cable is easily connected to the battery with the ring terminals. The visible end is not just a dirt-cap to prevent dirt from getting into the charging socket; it is an extremely practical battery indicator! The battery indicator will show the status of the battery via the red, yellow or green light. Using the battery indicator on the Charging Cable, you can easily check the status of your battery, and it is easy to connect to SmartCharge when you need to charge. Could it get any easier?



Small engines



SmartCharge adjusts itself to the type of battery and ensures optimal charging no matter what.



12V Charging Socket can easily be retrofitted to most equipment.



The charging cable should be kept easily accessible, so that you don't have to find your way to the battery.

SmartCharge accessories

SmartCharge is designed to make recharging easy. We have therefore developed a range of accessories to make the job even easier. With the 12V Charging Socket or 12V Charging Cable, you won't even need to find your way to the battery in order to connect it to SmartCharge.

12V Charging Cable

- with ring terminal and battery status indicator.

Permanently mount the cable on your battery and avoid cumbersome access for every charge. Monitor your battery with the indicator and charge when needed. Intended for MC, ATV, scooters and smaller vehicles.



12V Charging Cable Kit

- with battery status indicator

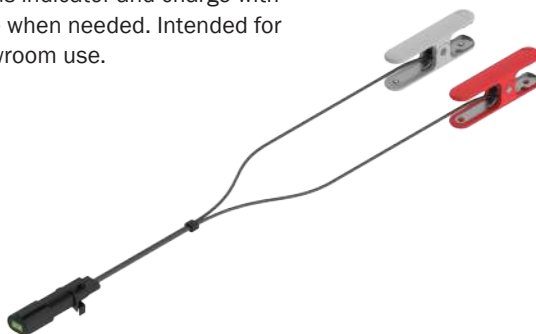
Power or charge your personal devices and monitor and charge your on-board battery with ease. Permanently mount the cable on your battery for easy plug-in charging. Intended for boats and caravans.



12V Charging Cable

- with clamps and battery status indicator.

Keep your showroom cars ready for a test drive. Monitor the power status with the battery status indicator and charge with ease when needed. Intended for showroom use.



12V Battery Status Indicator

Monitor your battery status.

- Red: Must be charged
- Yellow: Should be charged
- Green: Fully loaded





Dealer:

Read more about SmartCharge: defa.com

704657 UA 03122016